

Grassland Carbon Workshop

Opening Remarks

April 14, 2015



UNIVERSITY OF ALBERTA
FACULTY OF AGRICULTURAL,
LIFE & ENVIRONMENTAL SCIENCES
Rangeland Research Institute



Alberta

Agriculture and
Rural Development

Alberta Grasslands

Mixedgrass



Aspen Parkland



Foothills Fescue



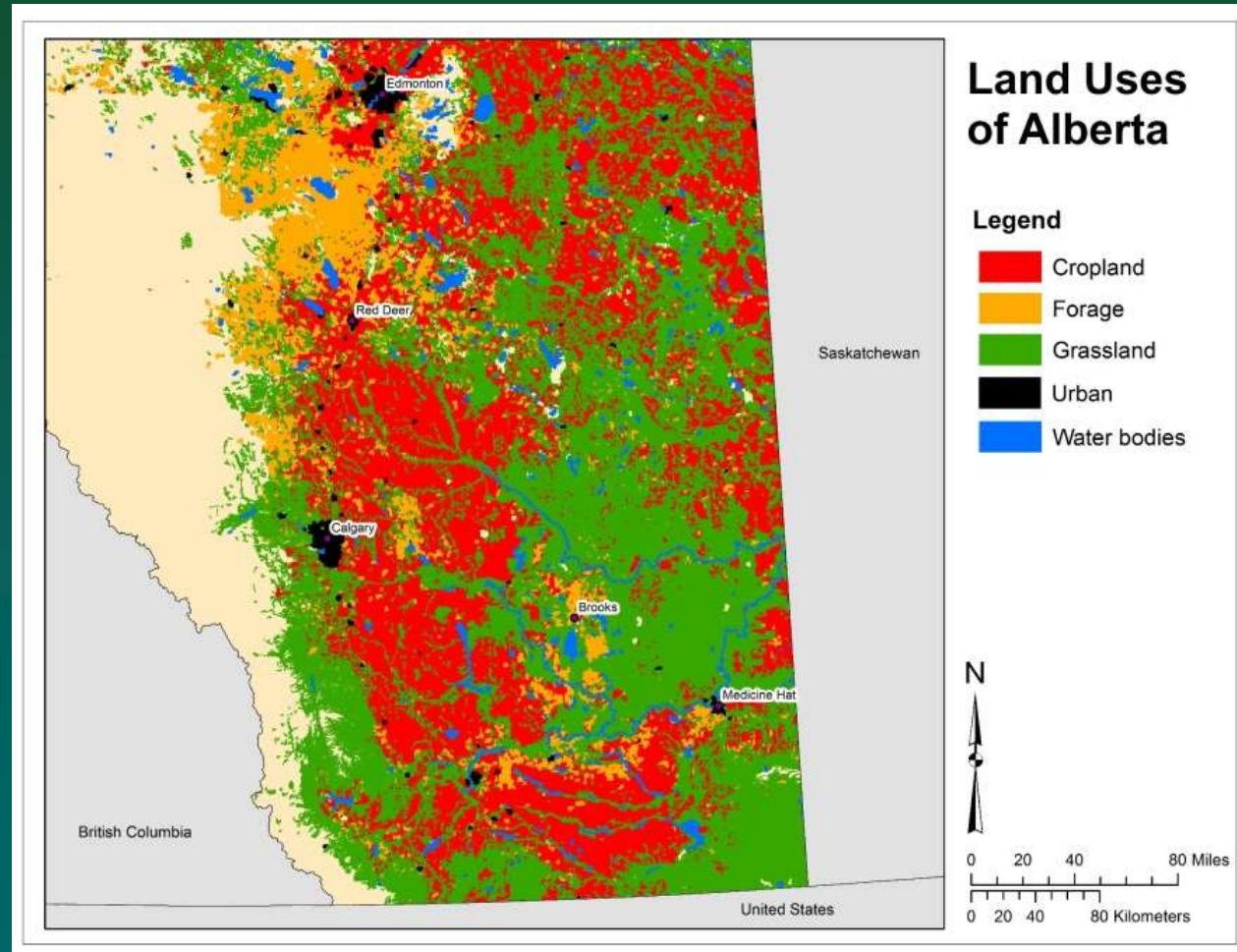
Montane



~9 M ha of grassland in AB (43% of all farmland):

- 6.5 M ha of native grassland
- 2.5 M ha of tame pasture

Remaining Grasslands are Variably Distributed



Socio-Economic Context of Grasslands



Beef Production:

- Breeding herd > 1.6M head
- Single largest agricultural commodity in AB (> \$3 B)

Rural Incomes can be Tenuous ...



"My banker's charging me 22% interest. I'm paying \$1.25 for diesel, seed prices have gone up 40% and this jerk thinks he's gonna rob me?!"

*What is the role
of environmental
goods &
services from
grasslands?*

*EG&S = benefits to the
public beyond
forage/beef*

Grasslands are Important Reservoirs of Biological Carbon



- *Large C pool*
- *Less susceptible to short-term disturbance*
- *Potential to offset atmospheric increases in CO₂*

Workshop Objectives

- 1) *Improve our awareness of what science has (or is) being done to understand grassland C (morning)*
- 2) *Understand potential methods to value grassland C, including linkages connecting science to policy outcomes (afternoon)*
- 3) *Engage in a constructive dialogue to identify data strengths/limitations, additional information needs, and opportunities/synergies*

We are purposefully a diverse audience!

